



E BRAKE
by Jacobs®

For '89 - '98 Dodge Ram Trucks
Equipped with the Cummins B5.9
Mechanical Engine

Parts
Manual

Application Notes

This Cummins E Brake by Jacobs kit, P/N 3804848, has been specifically engineered to fit your '89 - '98 Cummins Turbo Diesel powered Dodge Ram truck without requiring any fabrication or modification. This kit is designed for all '89 to '98 trucks. See the notes below for specific application issues.

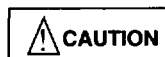
1. **For those vehicles equipped with EGR valves:** The E Brake **cannot** be installed in those vehicles equipped with EGR valves. To check if your truck is equipped with an EGR valve, check the engine CPL number stamped into the Engine Data Plate attached to the left side of the engine's gear housing. Your vehicle is equipped with an EGR valve if its engine CPL number is 1863.
2. Certain 1995-1996 vehicles were not equipped with a check valve in the vacuum supply system. This check valve is required for proper operation of the E Brake and must be present on your vehicle.

Check your engine serial number (ESN) to determine whether your engine requires installation of this check valve. The ESN can be found on the Engine Data Plate, located on the left side of the gear housing next to the oil fill tube. The ESN is located to the right of the Timing TDC Specification.

If your ESN is between 45232867 through 45360437 or 56230585 through 56293175 your engine may require installation of this check valve. If your ESN falls within this range, or if you have concerns regarding this check valve, please refer to Chrysler Technical Service Bulletin number 24-16-96, available from Chrysler dealers. The Check Valve Package (Chrysler P/N 4883793AA) is available from Chrysler and includes the check valve, hose, and required connectors. The check valve alone is also available from Cummins distributors (P/N 3931558).

3. If your vehicle is from model year 1989 to 1993, you will need to obtain a Header Kit, P/N 3804854, to complete the installation.

For additional information or technical support, contact Cummins Customer Assistance Center by calling 1-800-DIESELS (1-800-343-7357).



THE EXHAUST BRAKE ASSEMBLY IS NOT FIELD SERVICEABLE. DO NOT ATTEMPT TO DISASSEMBLE EXHAUST BRAKE ASSEMBLY COMPONENTS OR DAMAGE TO THE EXHAUST BRAKE MAY OCCUR.

Optional Equipment - Not included in Kit

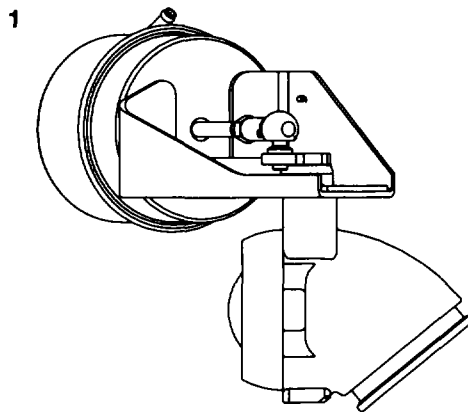
Pre-'94 Header Group - (Required for pre-'94 applications) Cummins P/N 3804854

III. No.	Cummins P/N	Description	Quan./ Group
NI	3933136	Header pipe (pre-'94)	1
NI	NSS	Capscrew	2

Included Parts and Equipment

E Brake Assembly Group Cummins P/N 3804849

III. No.	Cummins P/N	Description	Quan./ Group
1	3933128	E Brake assembly	1
NI	3929058	Gasket	1
NI	3945077	"V" Clamp	1

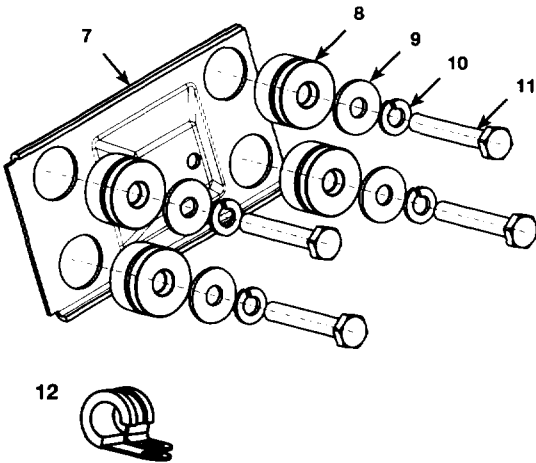
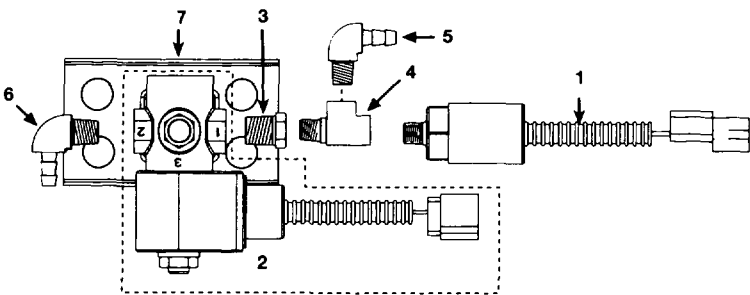


NI = Not Illustrated
NSS = Not Sold Separately

Notes

Pneumatic Group
Cummins P/N 3804852

III. Cummins			
No.	P/N	Description	Quan./ Group
1	3933132	Pressure switch assembly	1
2	3933133	Vacuum solenoid assembly	1
3	NSS	Reducer bushing	1
4	NSS	Street tee (brass)	1
5	NSS	90° elbow (1/4" hose to 1/8" NPT)	1
6	NSS	90° elbow (1/4" hose to 1/4" NPT)	1
	3800454	Bracket group	1
7	NSS	Mounting plate	1
8	NSS	Isolator grommets	4
9	NSS	Fender washer	4
10	NSS	Lock washer, M6	4
11	NSS	Hex bolt, M6 x 1 x 40	4
NI	NSS	Well nut	4
NI	NSS	Machine screw, #8-32 x 3/8"2	4
NI	NSS	Lock washer, #8	2
NI	NSS	Hose clamps	4
NI	NSS	Plastic tee	1
NI	NSS	Hose, 1/4" I.D., 30"	2
NI	NSS	Hose, 1/4" I.D., 6"	1
NI	NSS	Hose, 1/4" I.D., 1.5"	1
12	NSS	P-clip	1
NI	NSS	Lock nut, M6 x 1	1

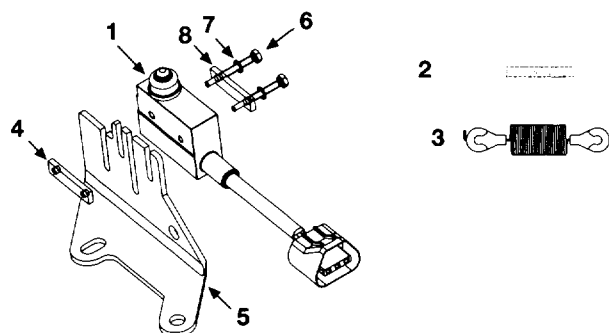


NI = Not Illustrated
 NSS = Not Sold Separately

Exhaust Valve Springs (NI), Quantity: 6
Cummins P/N 3916691

Engine Control Group
Cummins P/N 3804851

III. Cummins No. P/N	Description	Quan./ Group
1 3933129	Fuel pump switch	1
2 3933130	Throttle spring ('94 - '96)	1
3 3933131	Throttle spring ('97- '98)	1
4 NSS	Clamp	1
5 NSS	Fuel pump switch bracket	1
6 NSS	Screw	2
7 NSS	Lock washer	2
8 NSS	Clamp	1
NI NSS	Lockwasher	1
NI NSS	Nut	1
NI NSS	Bolt	1



Wire Harness Group
Cummins P/N 3804853

III. Cummins No. P/N	Description	Quan./ Group
NI NSS	Wire harness	1
NI 3800628	Jumper Harness	1
NI 3933135	Time-delay relay	1
NI NSS	Sheet metal screw	1

Dash Switch Group
Cummins P/N 3800667

III. Cummins No. P/N	Description	Quan./ Group
NI NSS	Button Switch/Harness Assy. (for '94 - '97 trucks without fog lights and Automatic Overdrive Transmission)	1
NI NSS	Rocker Switch/Harness Assy. (for all other applications)	1
NI NSS	Plug	1
NI NSS	Switch bezel	1
NI NSS	Connector Housing	1
NI NSS	Conduit, 16 1/2" long	1

NI = Not Illustrated
 NSS = Not Sold Separately



E BRAKE

by Jacobs



Cummins Engine Company, Inc.
Box 3005
Columbus, IN 47202-3005
U.S.A.

Bulletin 3698956
Printed in U.S.A. 5/98
©1998 Cummins Engine Company, Inc. and
Jacobs Vehicle Systems, Inc.