



Cummins READY™

Advancing high-quality, equitable STEM education for learners of all ages.

VISION

To power the pathway to education and career success



WHY READY

Three hundred million youth are out of school and 600 million students do not meet minimum proficiency rates in reading or math.

While progress has been made in areas like preschool access and high school graduation rates, major challenges remain around the world to achieving a quality education.

Cummins READY is working to change that. By harnessing the skills of Cummins employees, READY helps learners and workers advance in science, technology, engineering and mathematics (STEM) fields, opening doors to brighter futures and stronger communities.

OUR GOAL



To help at least one million learners and workers get on a pathway to education and career success by 2030

READY's approach to powering the pathway to education and career success.



1 INDIVIDUAL AND INSTITUTIONAL READINESS

Cummins READY operates on two levels: preparing individuals for success and equipping institutions to support that success. Working at both levels is necessary to advance education and career opportunities for all.

2 IMPACT ACROSS THE ENTIRE LEARNING CONTINUUM

Cummins READY supports STEM learning and engagement across the full educational continuum. By sparking curiosity and enthusiasm among multi-generational learners, READY promotes STEM awareness, exploration and proficiency for learners of all ages.

3 PARTNERSHIPS

Cummins collaborates with leading educational and nonprofit organizations to provide high-quality STEM experiences to learners and workers. Partnerships are essential to effectuate real and sustainable change. READY partnerships are evaluated based on geographic scope, scale of impact and nature of investment.



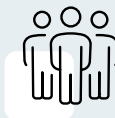
Equipment for Education (EfE)

EfE enables Cummins employees to support career and technical education programs in their local schools. Through engine and tooling donations, employees with deep expertise help students gain skills that are valued in the workplace.



Technical Education for Communities (TEC)

TEC is a school-based program that equips students with in-demand technical and vocational skills. Industry partnerships are leveraged to enhance curriculum, train teachers and provide work-based learning experiences.



Employee engagement

Cummins employees contribute to the success of Cummins READY by volunteering in STEM-focused community activities and spearheading employee-led grant partnerships.

Power to make a positive difference.

To learn more, visit cummins.com/company/esg/social